



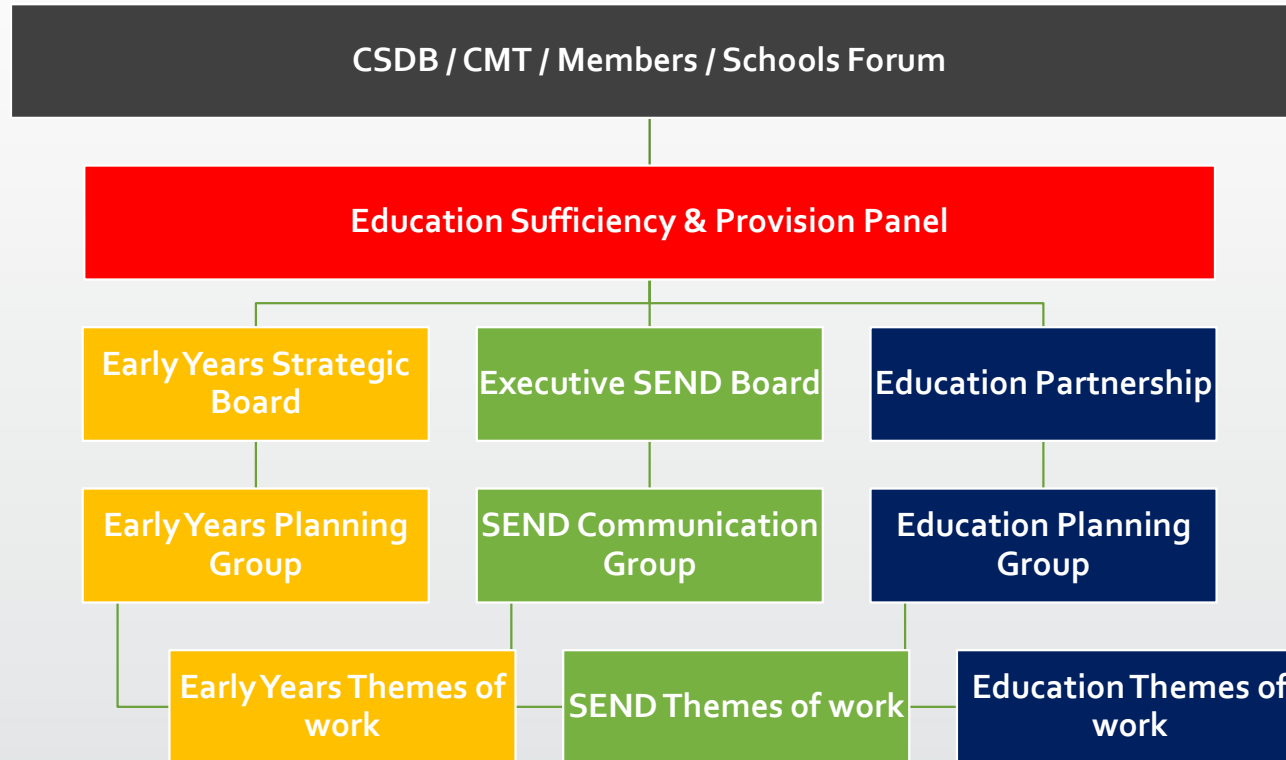
health about appropriate information  
provision any teacher all education  
ts/carers assessment data annual  
ular Practice class termly social  
additional including school working  
nating children quality authority  
ical many Primary pupils Code first under advi  
esignated SEND through effecti  
n impact staff SEND difficulties d  
ENDCO child's access guidance concerns Lead  
ng provided pupil assess date age develo  
meet schools Being responsible  
register Providing training language Emotional  
re review WC child need other  
ist monitoring made disability implementatio  
s support policy safegu  
vidual disabilities more learning meetings  
work

# SEND Developments

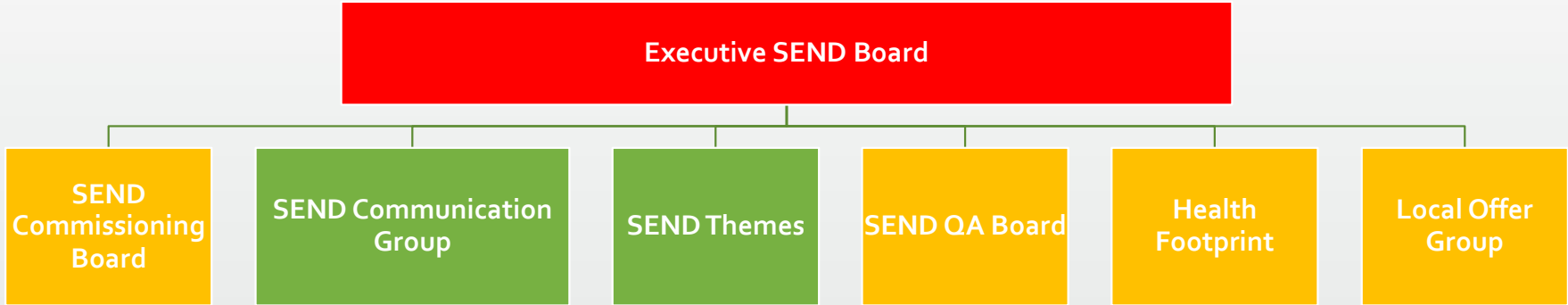
25/10/2023

Daniel Careless | DCC

# Governance



# Governance





# Key Partner Updates



# SEND Strategy November 2023 (1<sup>st</sup> Draft)

SEF (1<sup>st</sup> Re-draft) 25<sup>th</sup> November

Proposed Inclusion Strategy



# INVISION 360 – Quality Check

05/10/2023

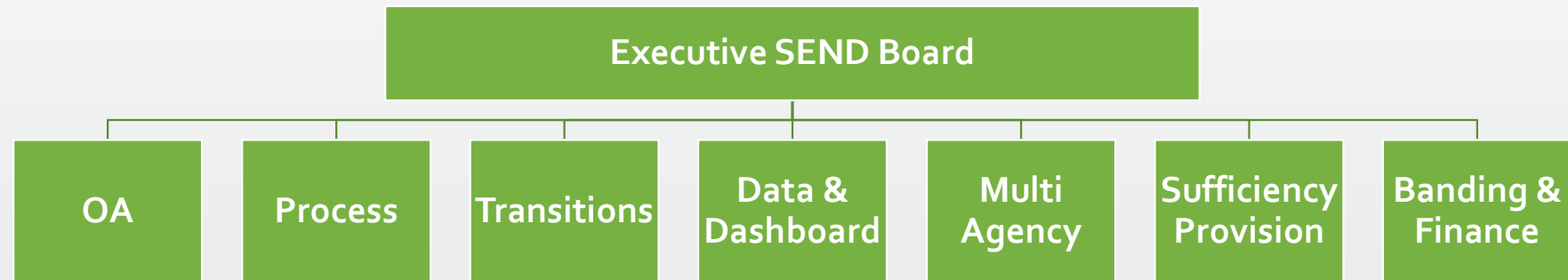
## IDOX – Approval Stages



Re-Design  
AISS  
ISS  
ACRE  
SEND

Updates: - Timeline – January/  
February Consultation

# Themes of Work







# Themes of Work Overview

Actions	No	Completed	On Target	Slight Risk	Risk	Group
Actions	26	8	6	1	4	Sufficiency
<b>Actions</b>	<b>22</b>	<b>6</b>	<b>1</b>	<b>7</b>		<b>Transport</b>
Actions	15	8	2	3	3	Data & Dashboard
Actions	31	5	7	10	9	Process
Actions	19	6	4	7	1	OA
Actions	29	4	2	21	2	Transitions
Actions	11	4	1	0	6	Finance / Banding
Actions	8	0	0	0	8	Multi Agency
	<b>161</b>	<b>41</b>	<b>23</b>	<b>49</b>	<b>35</b>	



# Themes of Work Overview

Actions	No	Completed	On Target	Slight Risk	Risk	Group
Actions	26	8	6	1	4	Sufficiency
Actions	22	6	1	7	2	Transport
Actions	17	10	3	1	2	Data & Dashboard
Actions	31	5	7	10	9	Process
Actions	22	9	1	1	11	OA
Actions	30	9	12	8	2	Transitions
Actions	11	4	1	0	6	Finance / Banding
Actions	8	0	0	0	8	Multi Agency
	167	51	31	28	44	



Wider Outcome  
Ordinarily Available

Smaller Goal

Actions/deliverables  
to achieve goal

Impact  
data/information

Intended impact

How?

Impact measure? How will we know?



## Outcome Framework

Create a clear picture across all services of the graduated response to ensure easy access to the right support at the right time for children/young people and their families.

Clear picture of what is ordinarily available in Health, social care and education across the four areas of need.

Clear picture of Criteria and thresholds for specialist supporting Health, social care and education across the four areas of need.

Clear access and referral routes

Identification of gaps in service delivery/offer

Clear strategic and operational plan to ensure identified gaps are considered and addressed.

Clear communication of the offer

Mapping out across services of support pre-diagnosis/threshold

Mapping out across services of specialist and targeted support

Referral and access information collated and communicated for all specialist/targeted services

Feedback sessions with stakeholders and service users focused on identifying potential gaps. Case studies to test the mapped provision.

Training and resources developed and linked to services  
Increased joint commissioning options

Development of the local offer – ensuring it fit for purpose  
Updating of the local offer

Visual representation of what is ordinarily available for each service area and each area of need

Visual representation of specialist and targeted support for each service area and each area of need

Visual representation of referral routes etc  
FAQs, 'how to' guides

Info and data from feedback sessions and case studies

CYP and family feedback/surveys  
SENDCo feedback  
Co-produced resources and packages

SENDCo Feedback Inclusion Panel increase  
Impact of Inclusion Panel???



Ability to look at provision and commission, procure and develop options in areas of need with a local area agreement and understanding.

0 – 6 months

6 – 12 months

12 months – 24 months

24 – 48 months

Ongoing

Clear mapping of ordinarily available provision across education, health and social care linked to the four broad areas of need.  
Clarity of thresholds and criteria for targeted and specialist support and provision.  
Identification of gaps across the system and planning around how gaps will be filled.  
Testing the clarity of how support and provision is communicated and accessed to CYP and families.  
Joint commissioning opportunities explored  
Workforce development needs identified and planned  
Training and development offer for schools and settings identified and developed.

Gaps to be considered linked to service capacity as well as skills  
Joint commissioning opportunities agreed and actioned  
Workforce development actioned  
Training offer for schools and settings developed  
Development of the Local Offer to ensure clear communication of provision from universal through to specialist support (across the four broad areas).  
Ongoing updates to developments and changes to service offers  
Established, more efficient system with reduced need for diagnosis and referrals to specialist support



# Sufficiency and Provision Update

# Sufficiency and Provision





# Local Offer





## Pathways/graduated approach proposal

**Background:** An action in the 2022-23 workplan was to develop a range of different contexts that guide children and young people alongside parents and carers through the support and services available. Initially looking at SEMH. A small working group was set up to progress this.

**Development:** The working group has met face to face to develop the approach and outline how this could be applied to the website. See flow diagram to explain the placement on the website.

An outline mock-up of the page and the type of content has been produced and each scenario would follow this format. Consideration is needed to reframe the **My Child .. refuses/struggles to attend school** so it is from the child/young persons perspective which may look like **What about me.... I struggle /don't want to go to school.**

Local Offer Steering Group support this approach and all members commit to provide support and direction and own the content.



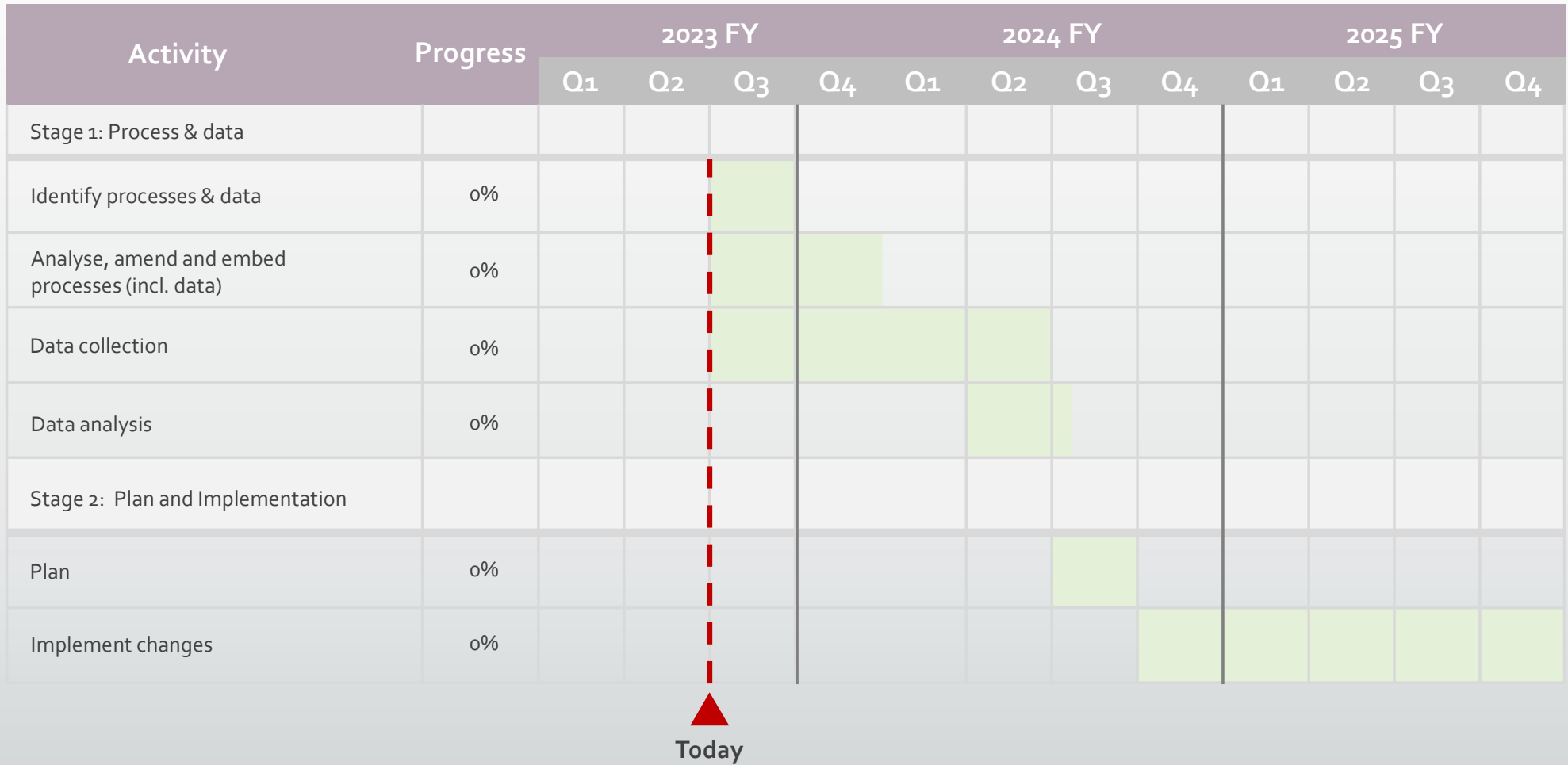
# Transport



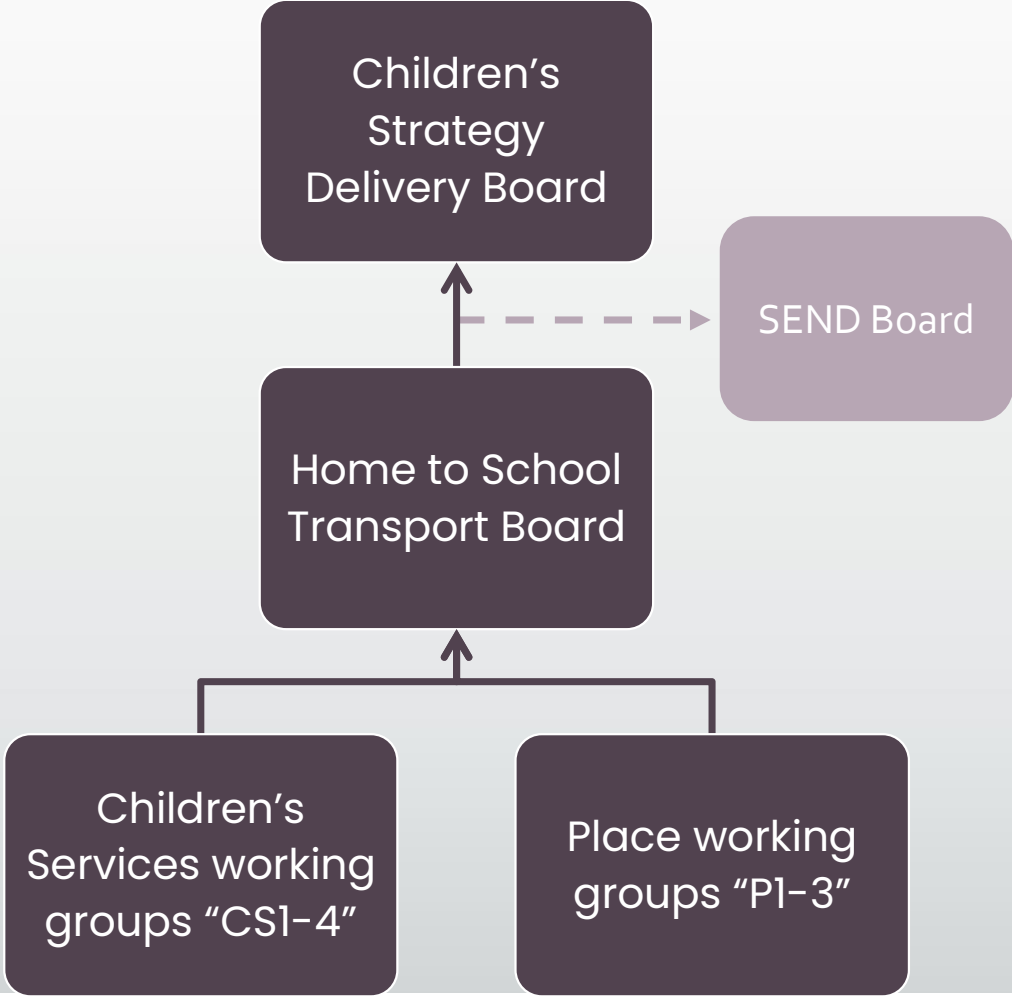
# Home to School Transport Improvement Plan 2023

Derbyshire County Council  
October 2023

# High-level Transport Programme



# Governance





# Questions and Answers

# Questions & Answers



Questions	Answers	Actions